



LVES Home L Series

9.4 kWh Low Voltage Battery

Leading Technology

- ✓ Best blade LFP battery and CTP technology
- ✓ Multi-level high efficiency heat dissipation system
- ✓ Advanced smart BMS and EMS

Ultra Safety & Reliability

- ✓ Safest blade LFP battery cell technology plus aerosol fire-protection system for ever best safety
- ✓ Built-in heat dissipation system ensure long-term stability and reliability
- ✓ Easier set up and operation

Top-notch Performance

- ✓ 100A rapid charge and discharge ability
- ✓ Higher DOD (95%) for more usable energy
- ✓ Lighter weight

Comprehensive Smart IOT Platform

- ✓ Creative IOT and AI technology based smart platform for online configuration, monitoring, operation and upgrading services

“Power Your Home
Power Your Life”

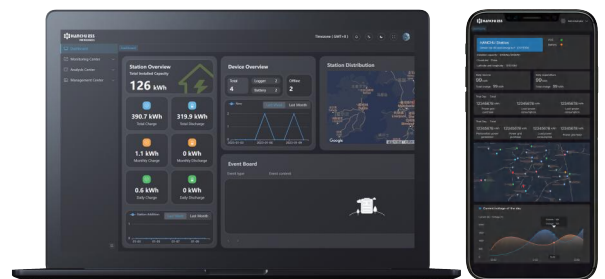
LVES Home L Series

Model	HOME-ESS-LV-9.4K
Nominal Energy	9.4kWh
Capacity (LVES-L Series)	9.4kWh/18.8kWh/28.2kWh/37.6kWh/ 47kWh/56.4kWh/65.8kWh/75.2kWh
Nominal Voltage	51.2V
Operating Voltage Range	43.2-57.6V
Cell Type	Blade LFP
Dimension(W*D*H)	430*150*800mm
Battery Model Weight	72Kg
Charge Temperature	From 0~50 C
Discharge Temperature	From -20~60 C
Depth of Discharge	95% DOD
Nominal Charging Current	100A
Nominal Discharging Current	100A
Safety	IEC 62619
IP Rating of Enclosure	IP65
Cooling Type	Natural
Humidity	≤95%
Warranty	5+5years
Communication Port	CAN/RS485/WIFI/Bluetooth
Transportation Certification	UN38.3/MSDS/DGM

IoT Technology Smart Systematic EMS Based on AI

An all-round platform to power your life

- ✓ Smart control to optimize your energy allocation provide 24/7 automatic monitoring
- ✓ Thoughtful cloud service for preserving batteries providing remote diagnostics or upgrades
- ✓ Intelligent technology extends battery life anticipates and resolves potential problems




Product Info.





Official Website

 info@hanchuess.com

 0510-88865288



 www.hanchuess.com

 No.588 Jinhui Road, Huishan District,
214177 Wuxi, Jiangsu, China